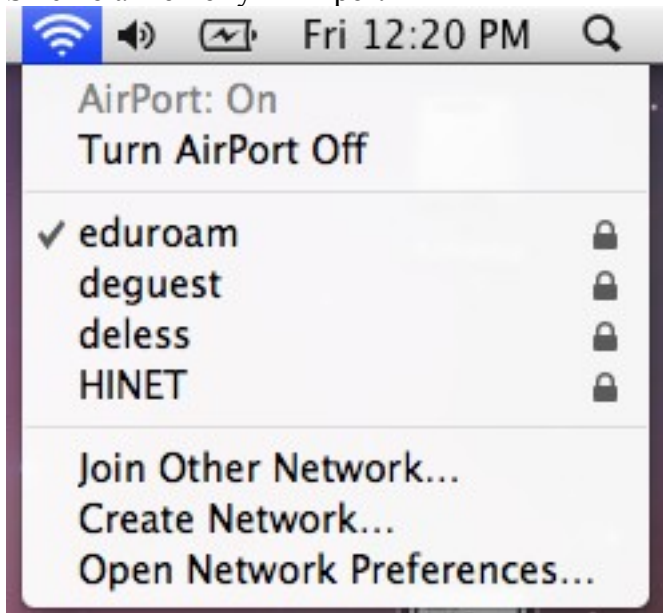


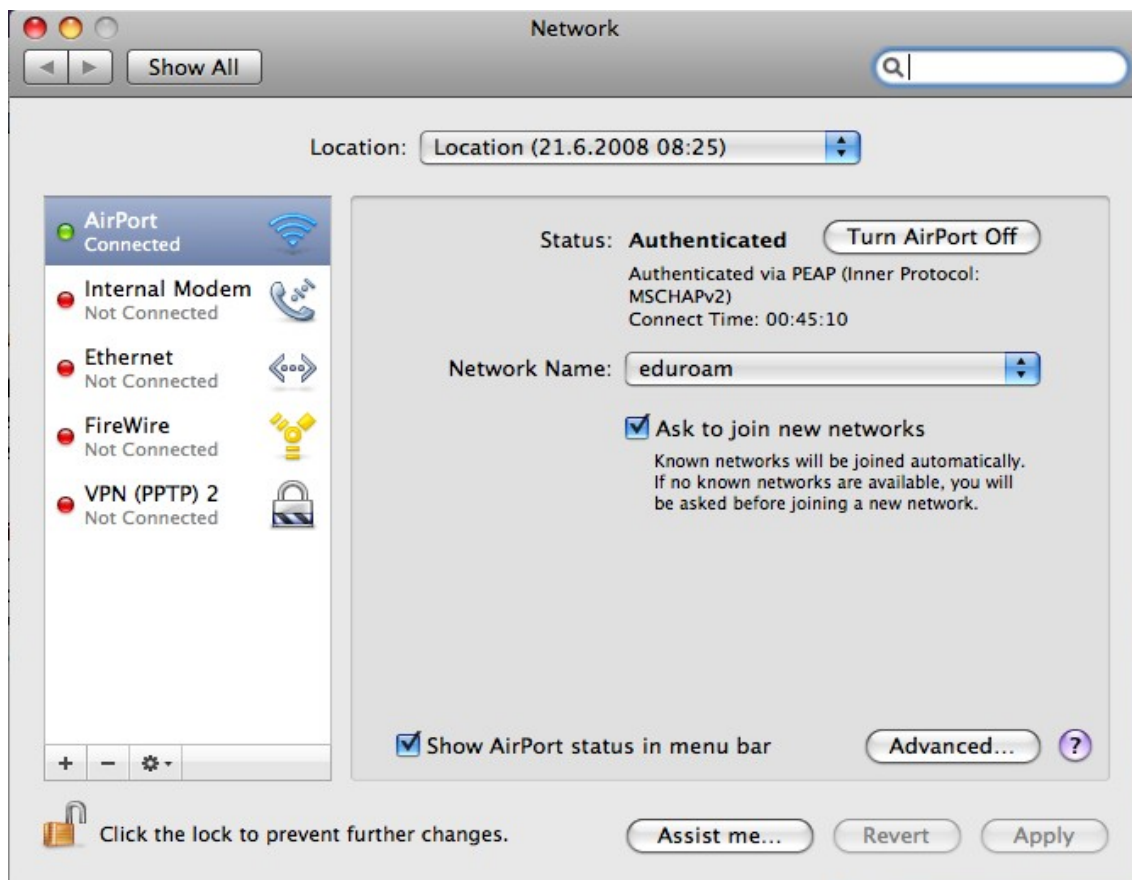
Eduroam

Eftirfarandi leiðbeiningar miðast við Mac OS X v10.5 “Leopard” stýrikerfið.

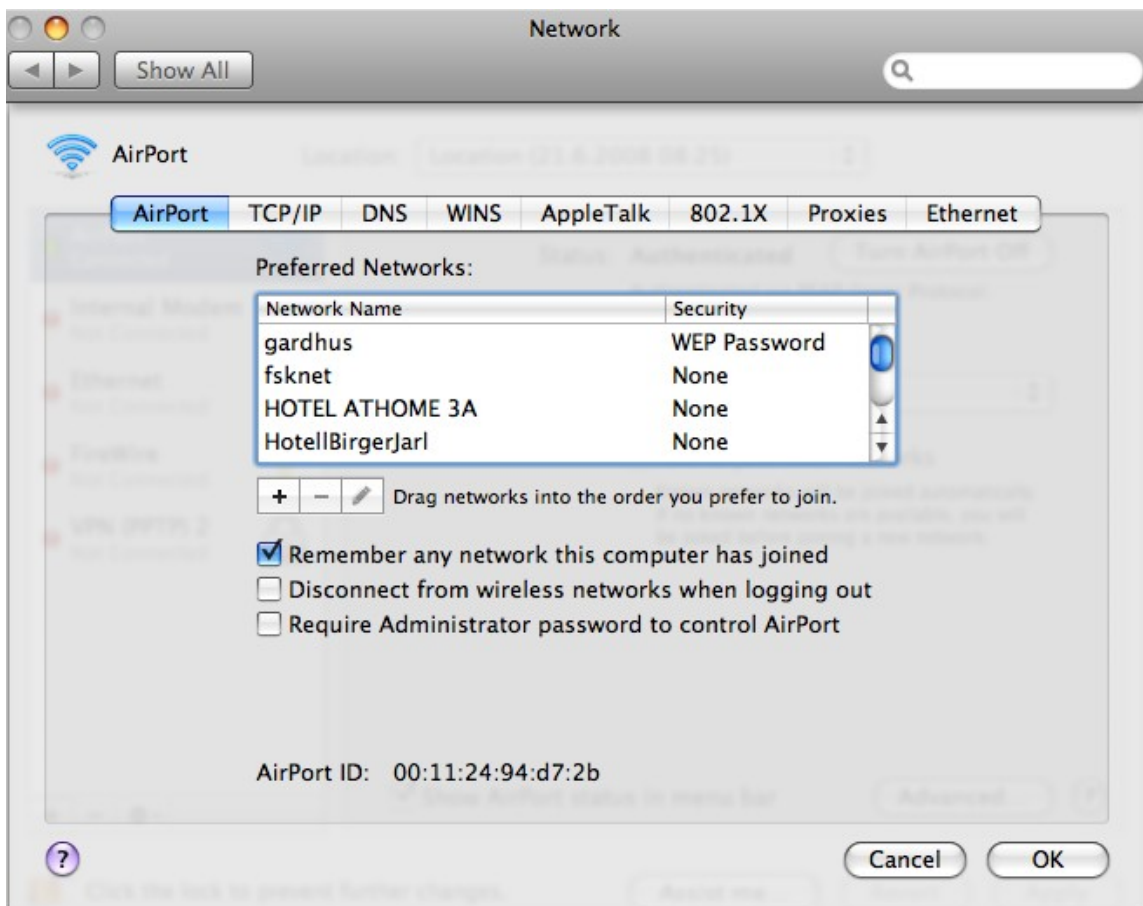
Smellið á ikonið fyrir Airport



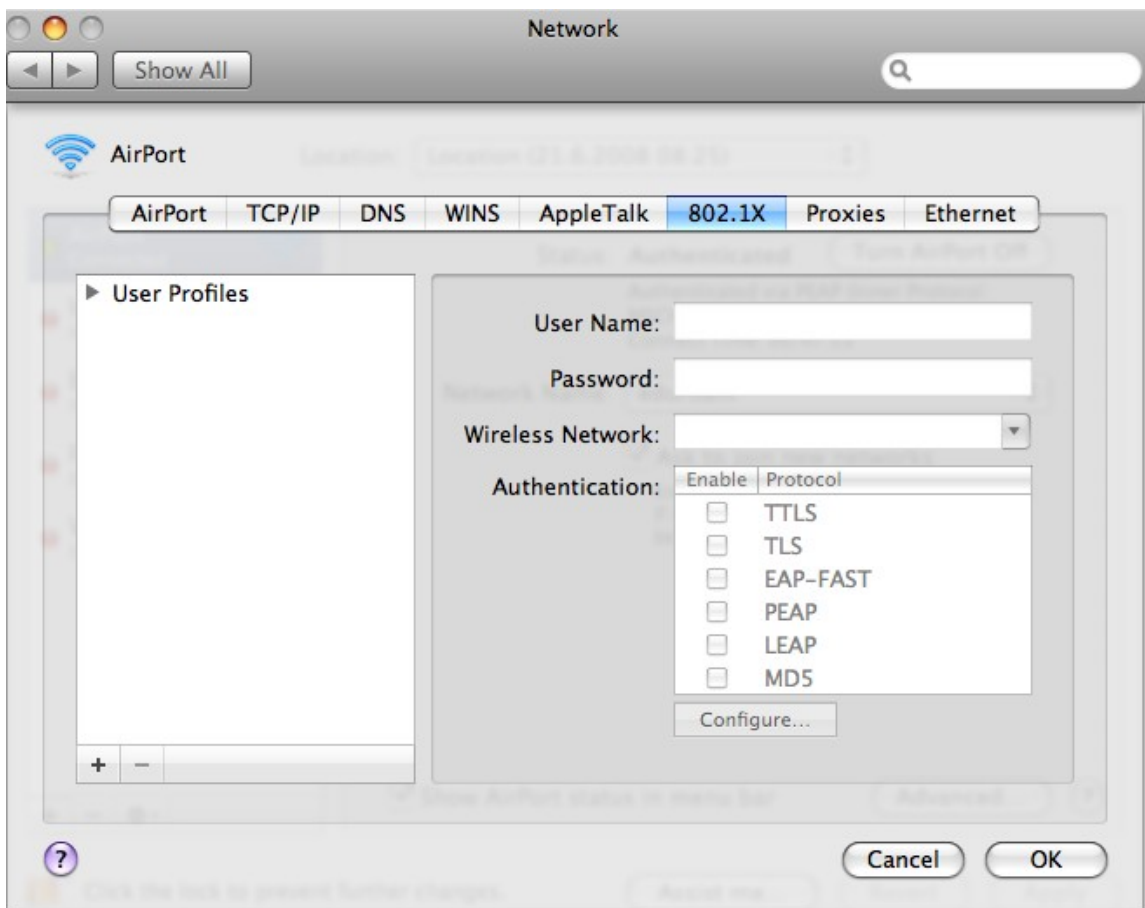
Veljið Open Network



Smellið á Advanced

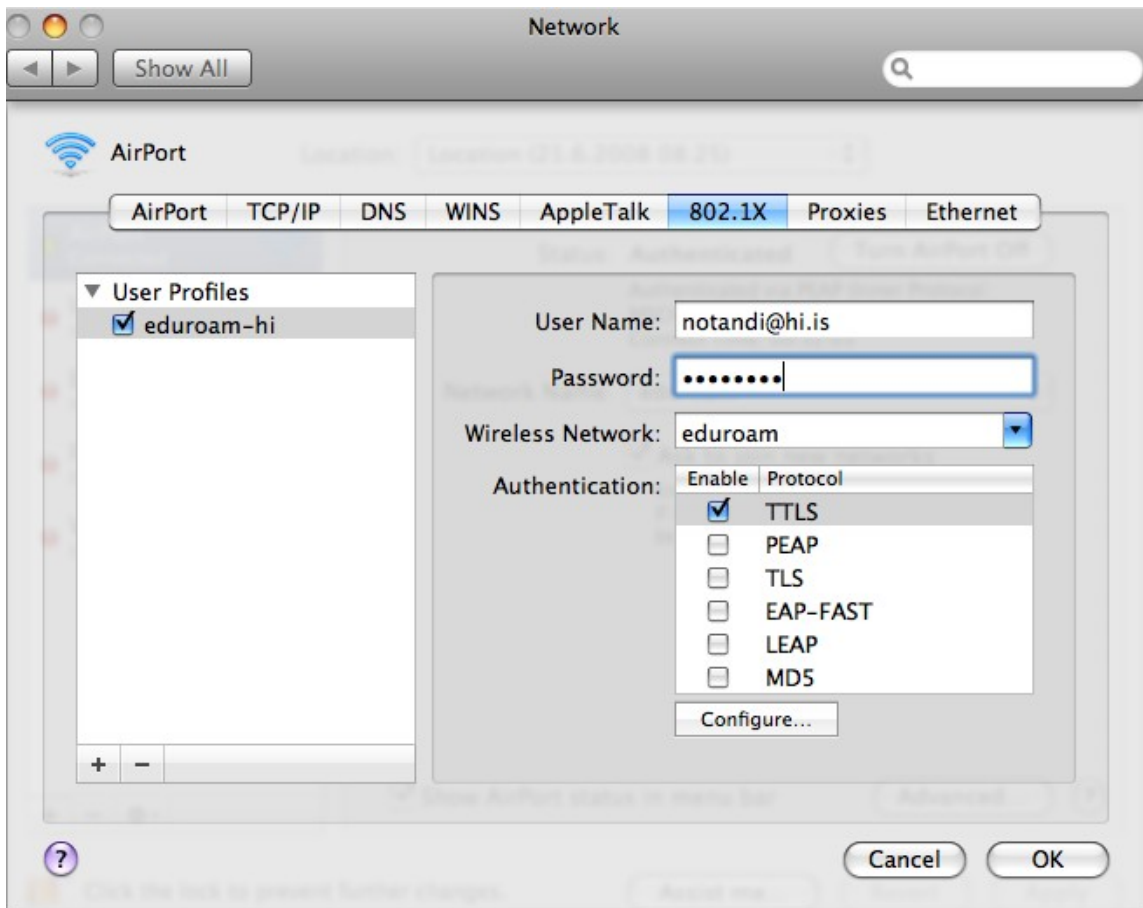


Smellið á 802.1X

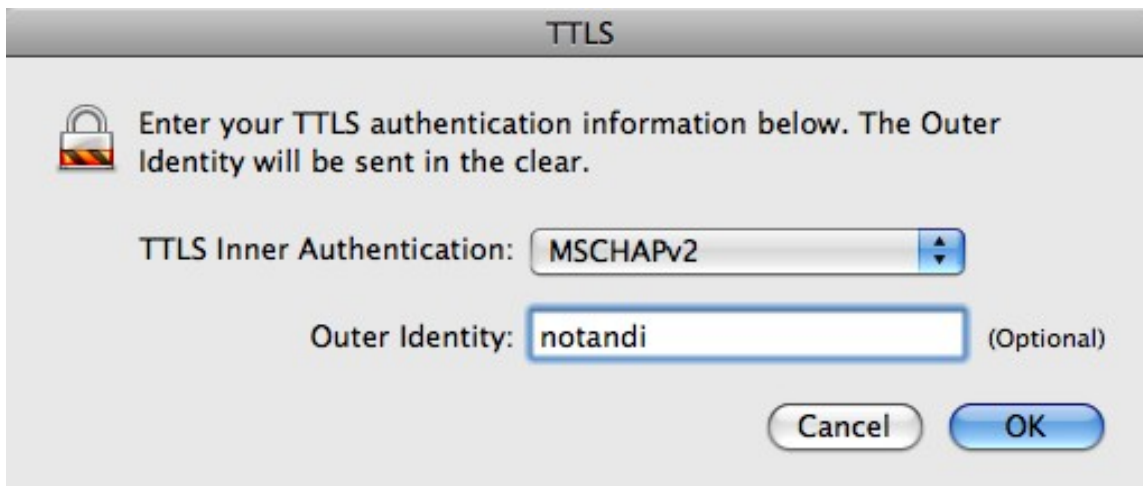


Smellið á + og veljið Add User Profile

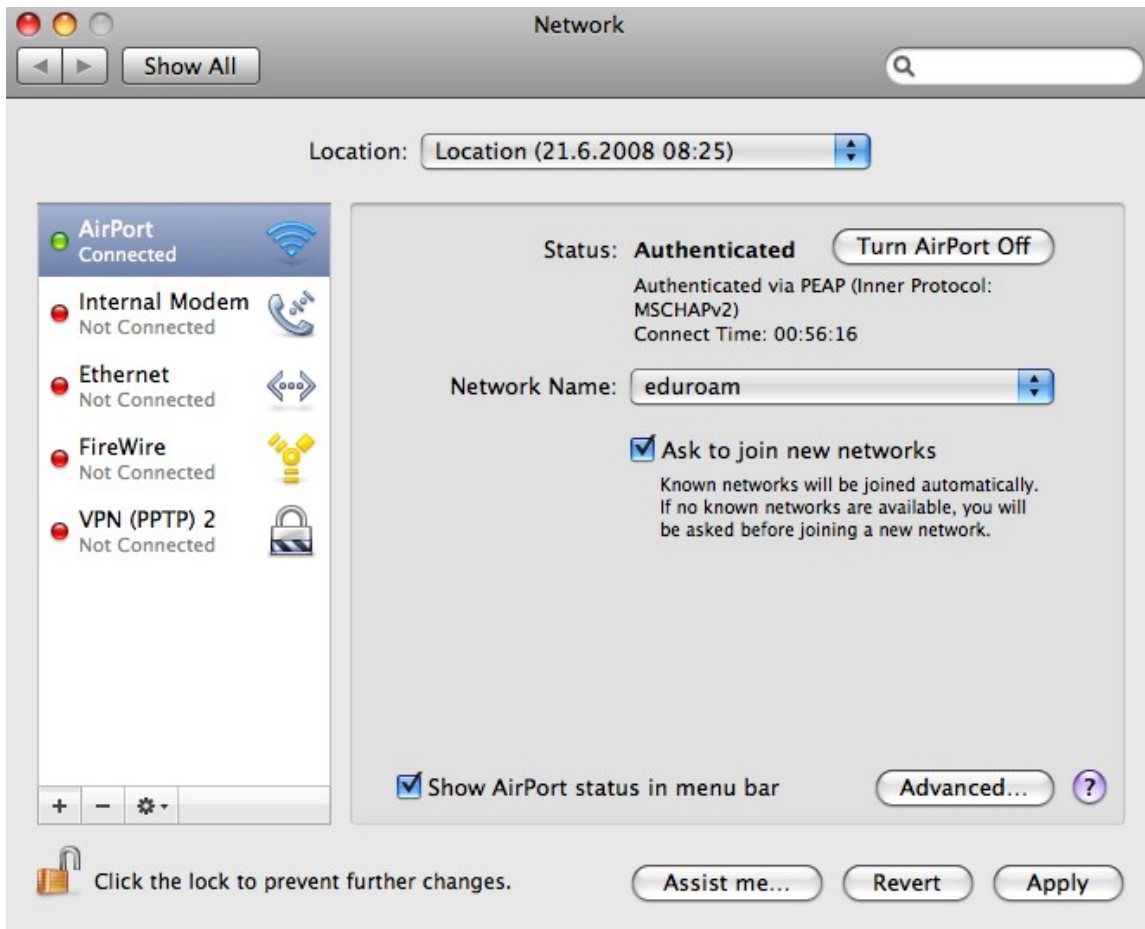
Gefið Prófilnum nafn, t.d. eduroam-hi og fyllið út reitina skv. næstu mynd



Smellið á TTLS og síðan á Configure



Hér skráið þið inn notandanafnið ykkar – án “@hi.is” - og smellið á OK



Smellið á Apply